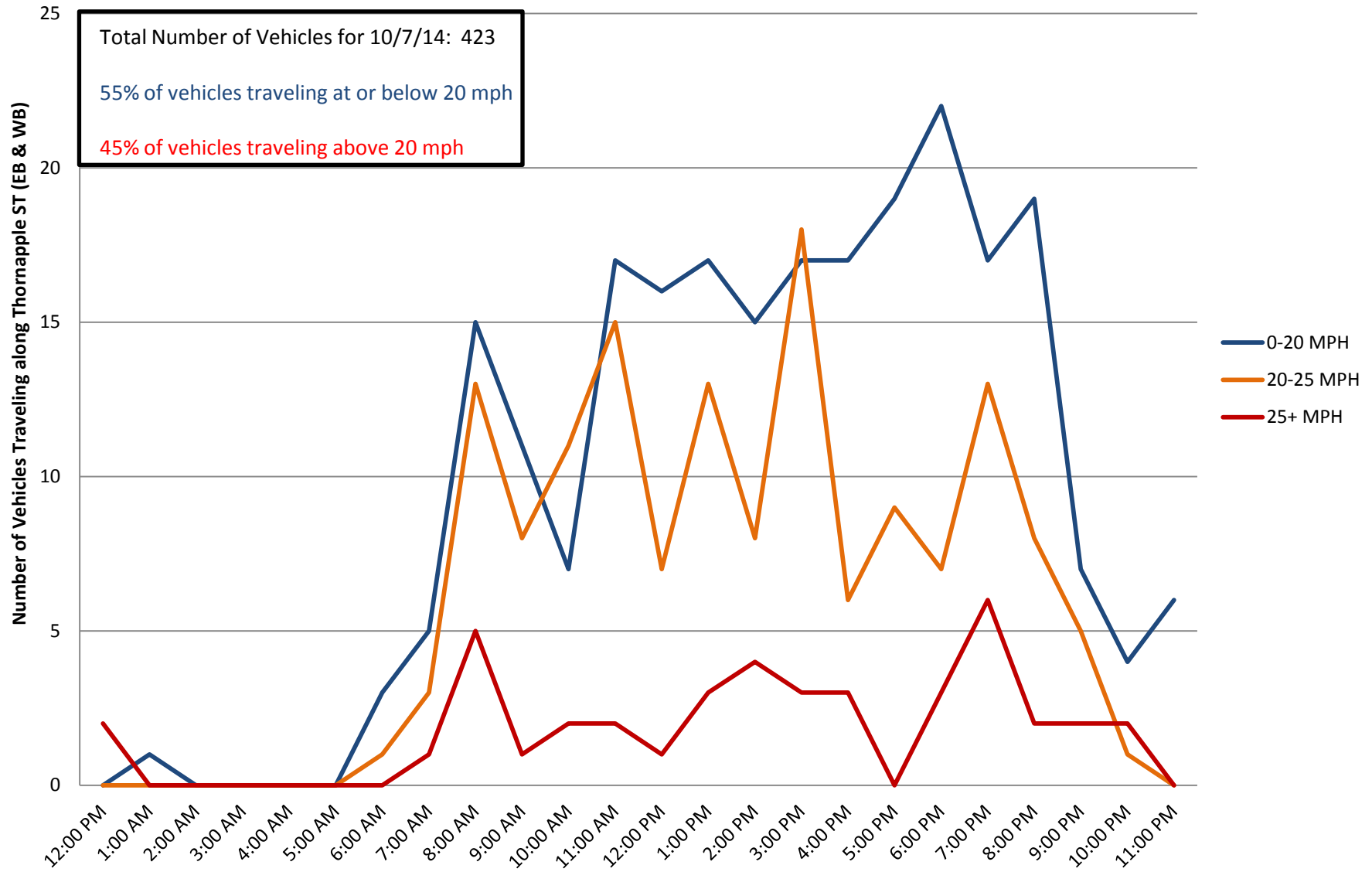
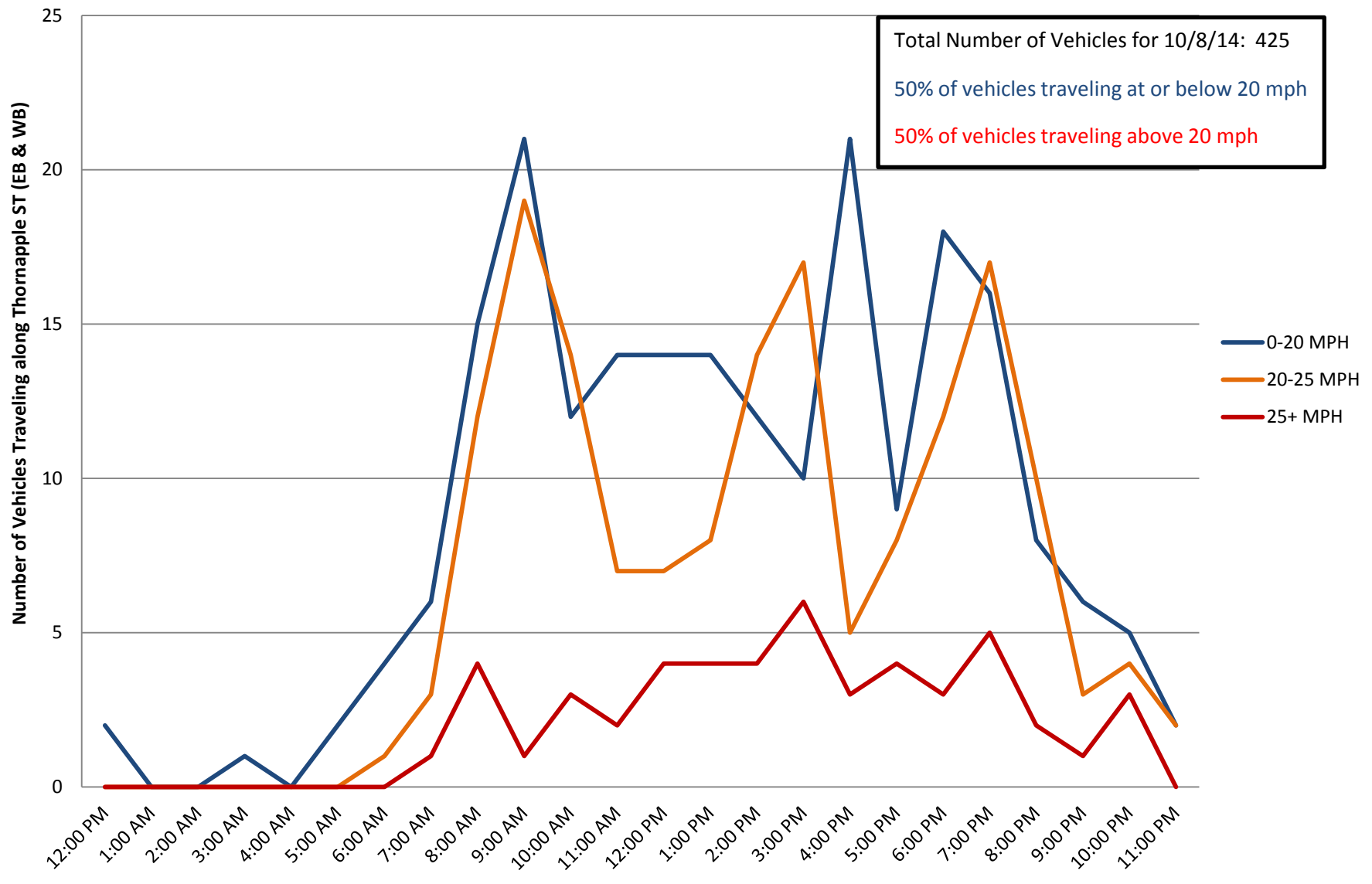


Site 1: Thornapple Street between Dalkeith Street and Thornapple Place
Travel Speeds of Vehicles by Hour (Tuesday, October 7th, 2014)

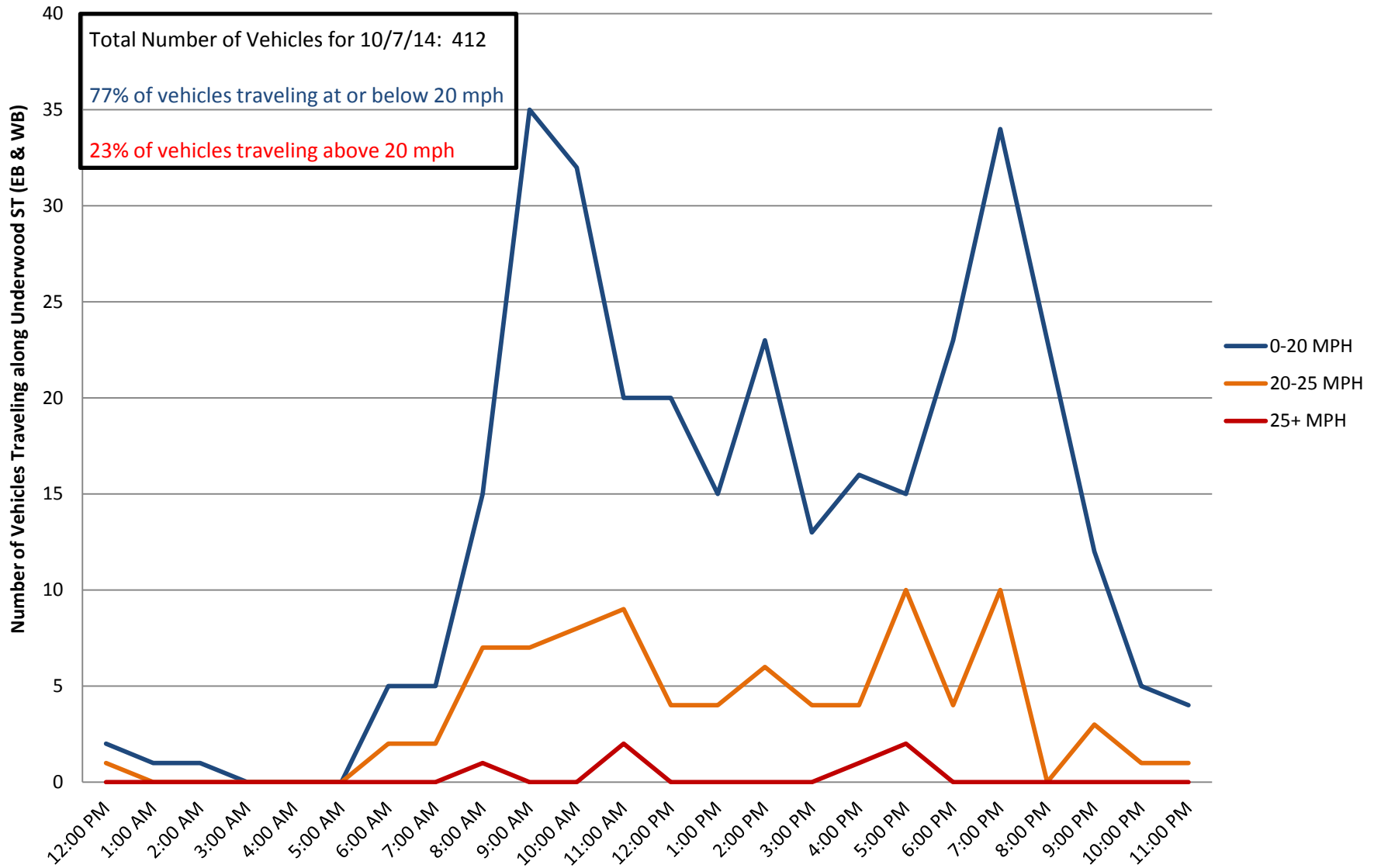
Posted Speed Limit: 20mph



Site 1: Thornapple Street between Dalkeith Street and Thornapple Place
Travel Speeds of Vehicles by Hour (Wednesday, October 8th, 2014)
Posted Speed Limit: 20mph



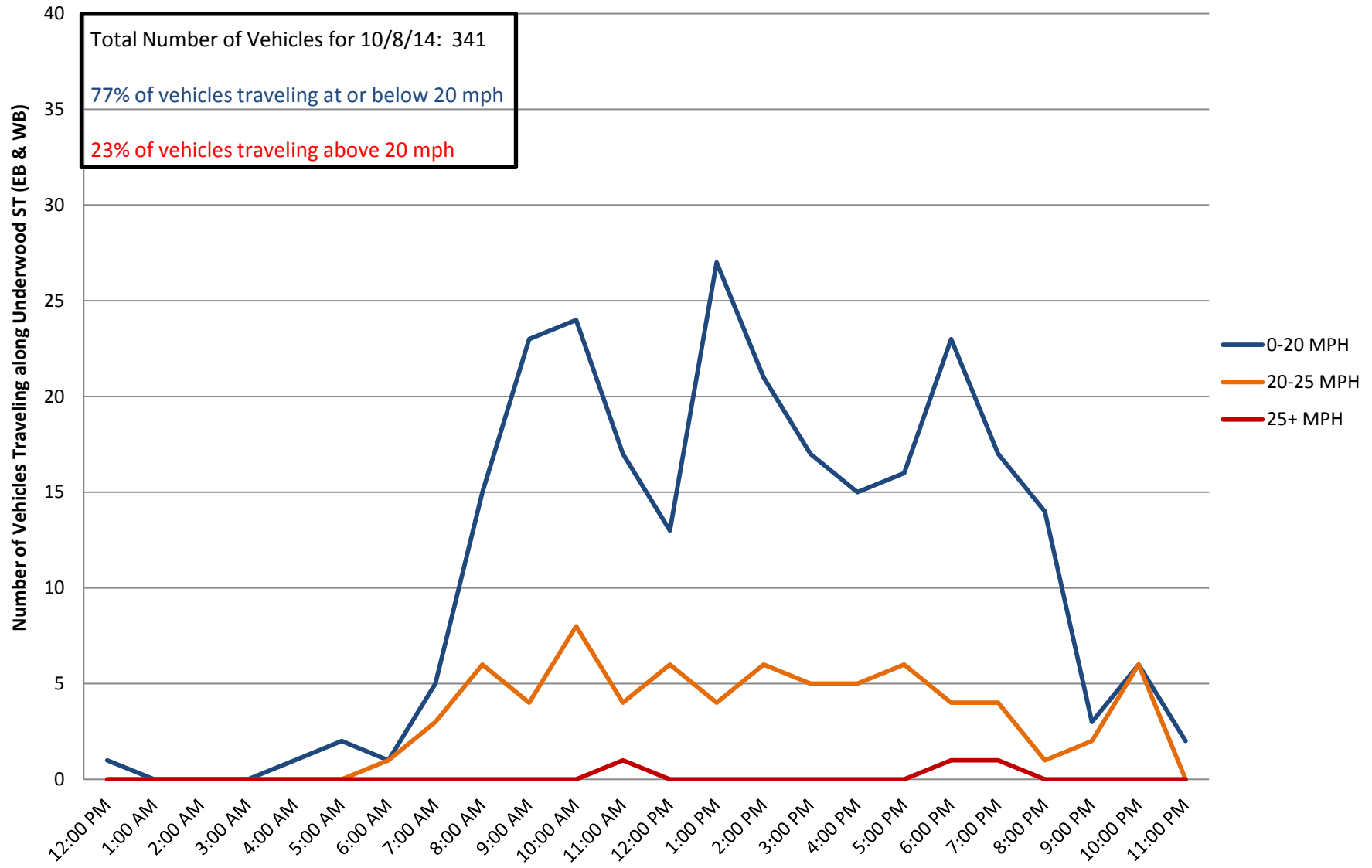
Site 2: Underwood Street between Dalkeith Street and Thornapple Place
Travel Speeds of Vehicles by Hour (Tuesday, October 7th, 2014)
Posted Speed Limit: 20mph



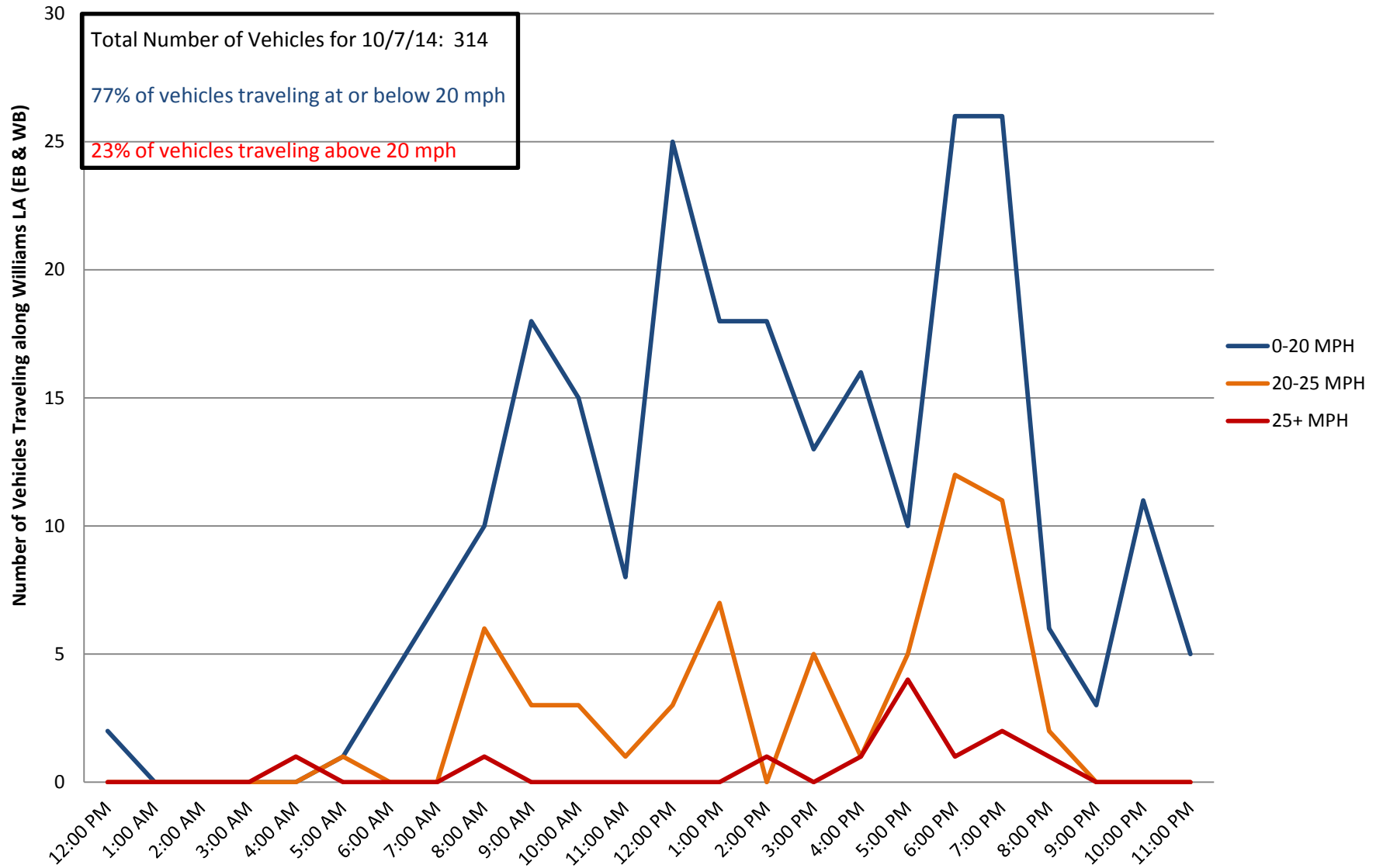
Site 2: Underwood Street between Dalkeith Street and Thornapple Place

Travel Speeds of Vehicles by Hour (Wednesday, October 8th, 2014)

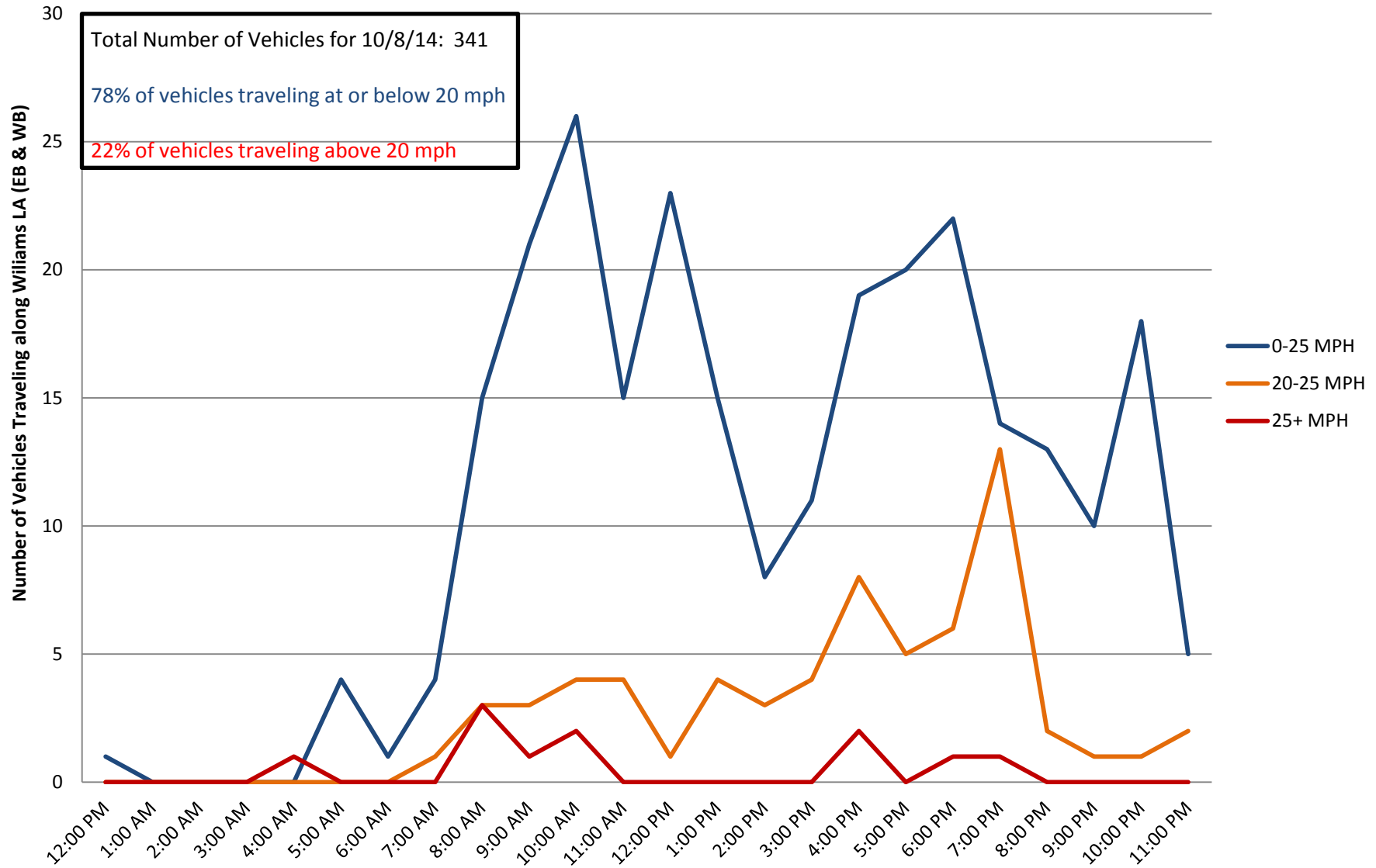
Posted Speed Limit: 20mph



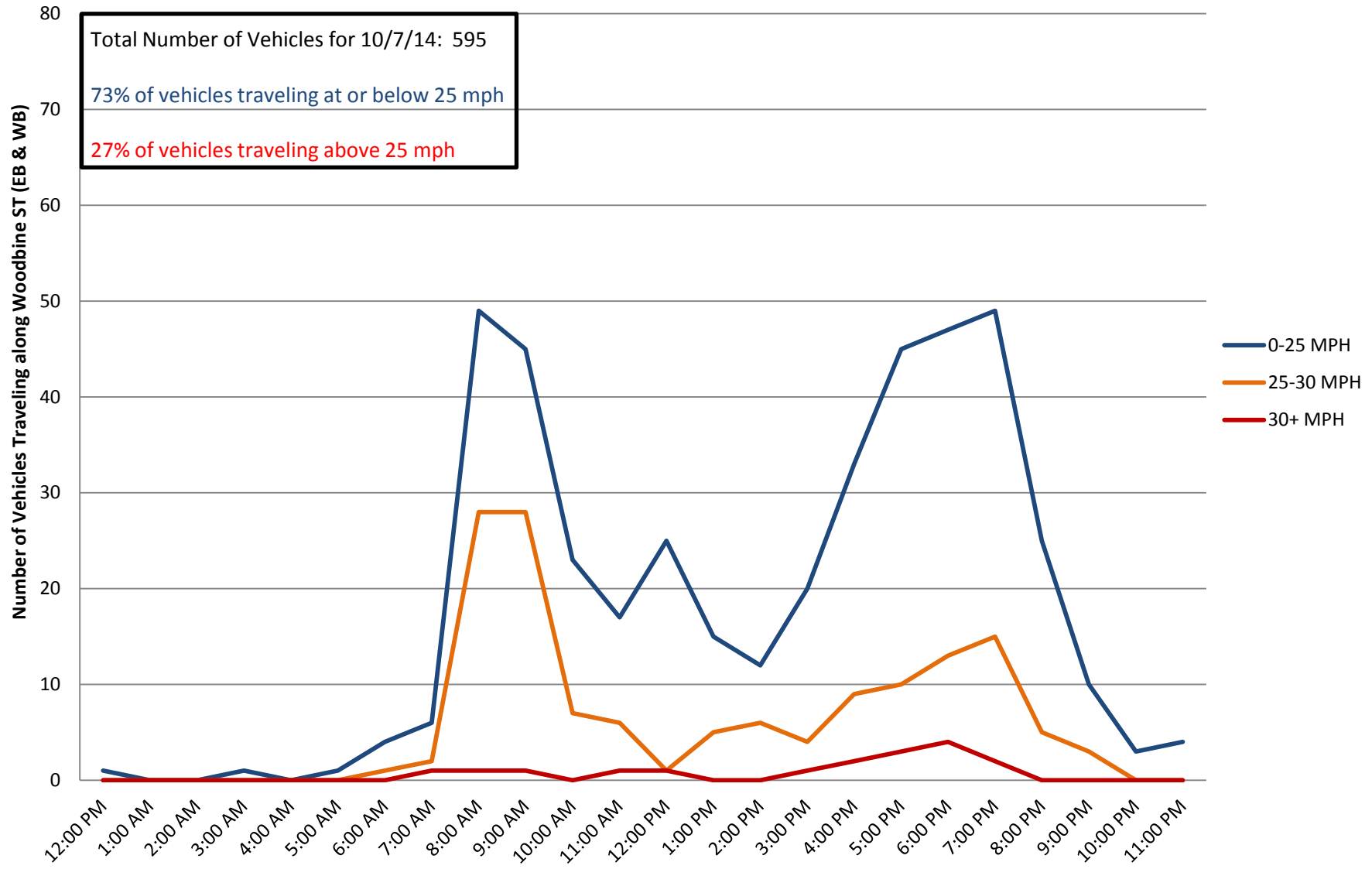
Site 3: Williams Lane between MD 185 and Brookville Road
Travel Speeds of Vehicles by Hour (Tuesday, October 7th, 2014)
Posted Speed Limit: 20mph



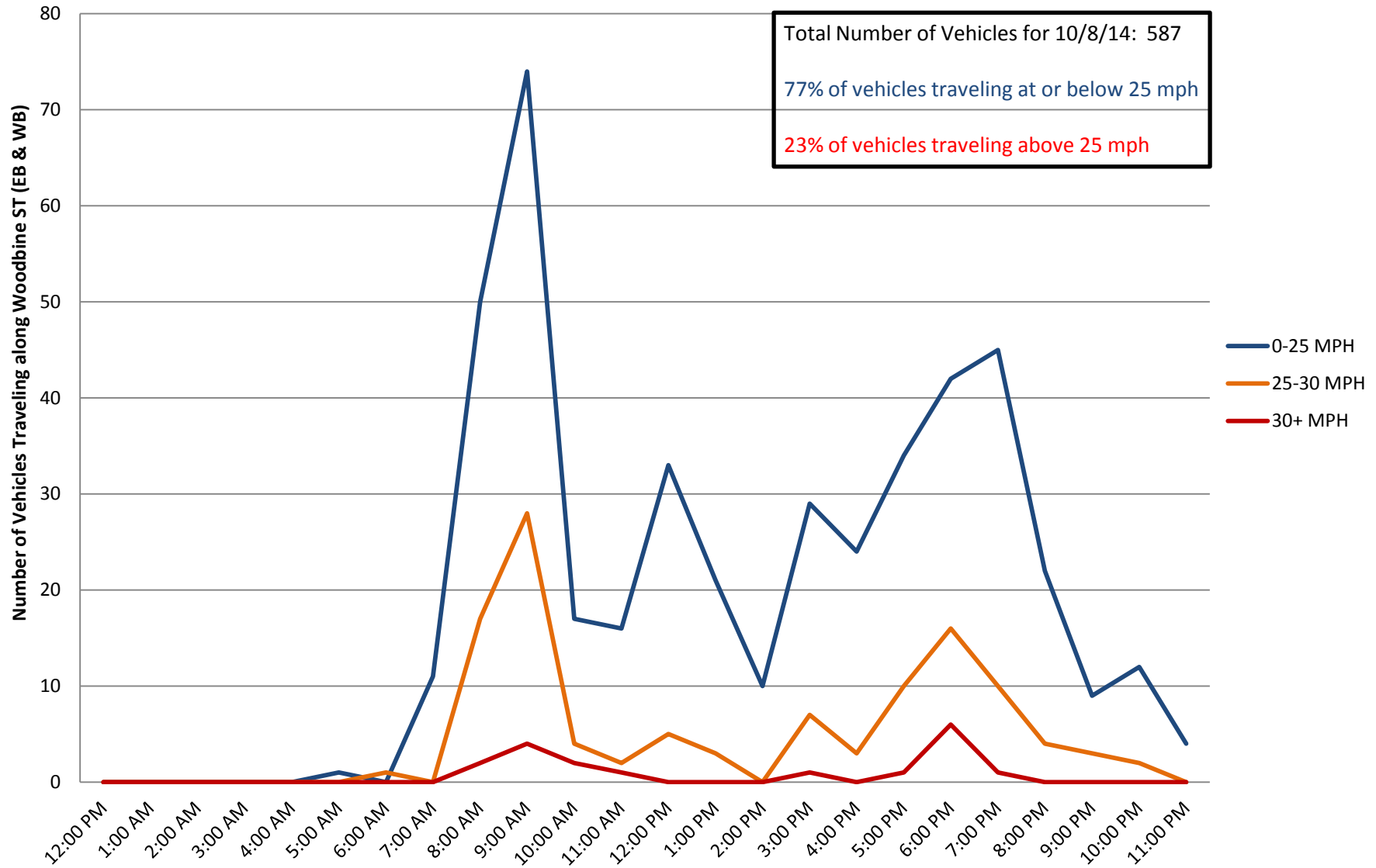
Site 3: Williams Lane between MD 185 and Brookville Road
Travel Speeds of Vehicles by Hour (Wednesday, October 8th, 2014)
Posted Speed Limit: 20mph



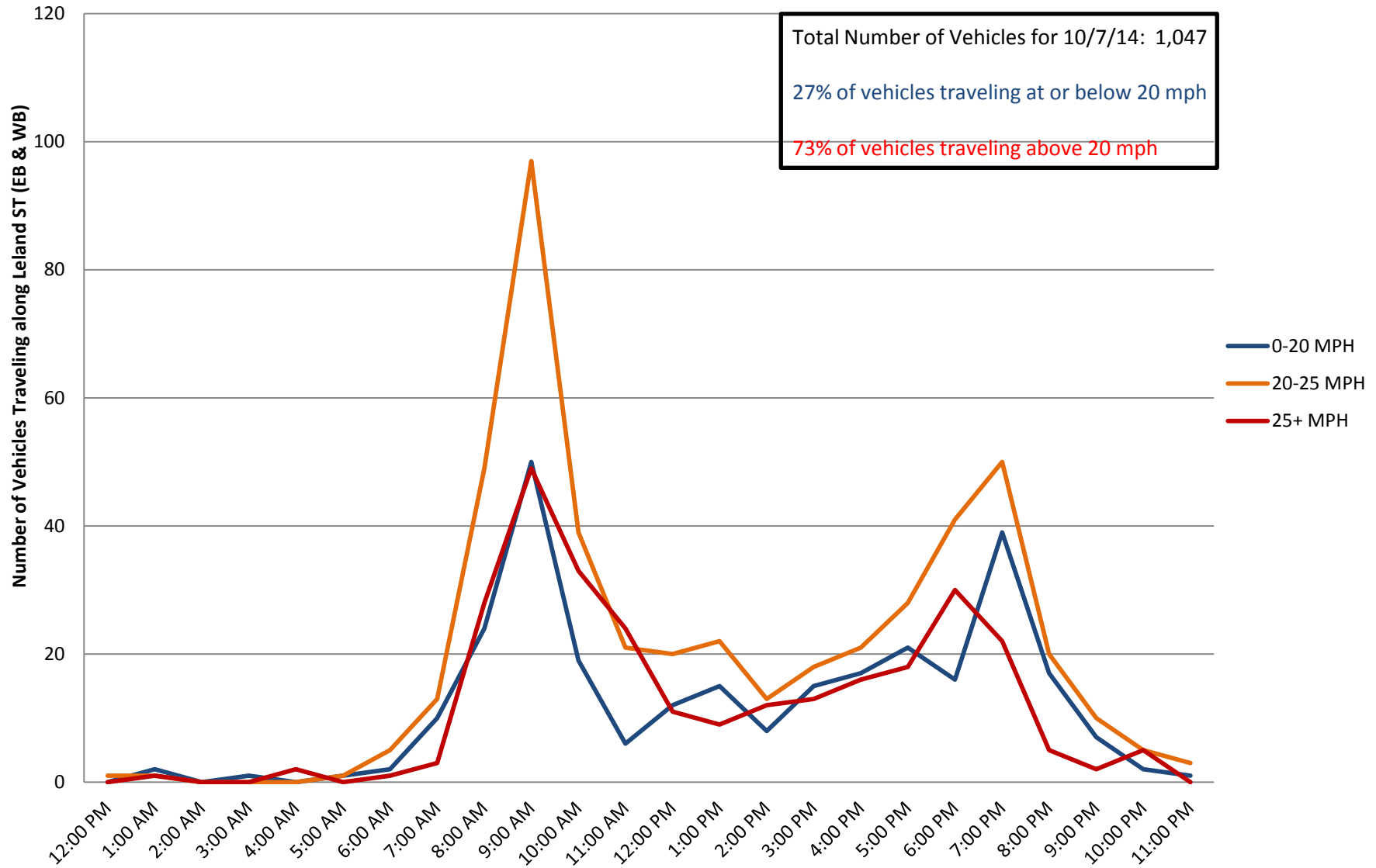
Site 4: Woodbine Street between MD 185 and Glendale Road
Travel Speeds of Vehicles by Hour (Tuesday, October 7th, 2014)
Posted Speed Limit: 25mph



Site 4: Woodbine Street between MD 185 and Glendale Road
Travel Speeds of Vehicles by Hour (Wednesday, October 8th, 2014)
Posted Speed Limit: 25mph



Site 5: Leland Street between MD 185 and Glendale Road
Travel Speeds of Vehicles by Hour (Tuesday, October 7th, 2014)
Posted Speed Limit: 20mph



Site 5: Leland Street between MD 185 and Glendale Road
Travel Speeds of Vehicles by Hour (Wednesday, October 8th, 2014)
Posted Speed Limit: 20mph

